



**Join Friends of
the Wichita Mountains
National Wildlife Refuge**

*With this membership you will
receive the Friends newsletter and
updates about Wichita Mountains
Refuge issues.*

Name: _____

Address: _____

City, State and Zip: _____

Email: _____

Phone: _____

I would like to support the Friends by volunteering to:

- Participate in work parties aiding the US Fish and Wildlife Service
- Serve as a representative for my community.
- Volunteer for a US Fish and Wildlife Service biological project.
- Assist in an educational/interpretive program or walk.
- Organize events.
- Write material for brochures, fliers, and displays.
- Assist in grant writing and fundraising efforts.
- Write advocacy letters to elected officials.
- Assist with the Wichita Mountains Refuge website
- Help with outreach activities at events.
- Other (Please describe)

- Individual \$25
- Family \$40
- Sponsor \$250
- Life \$500 or more

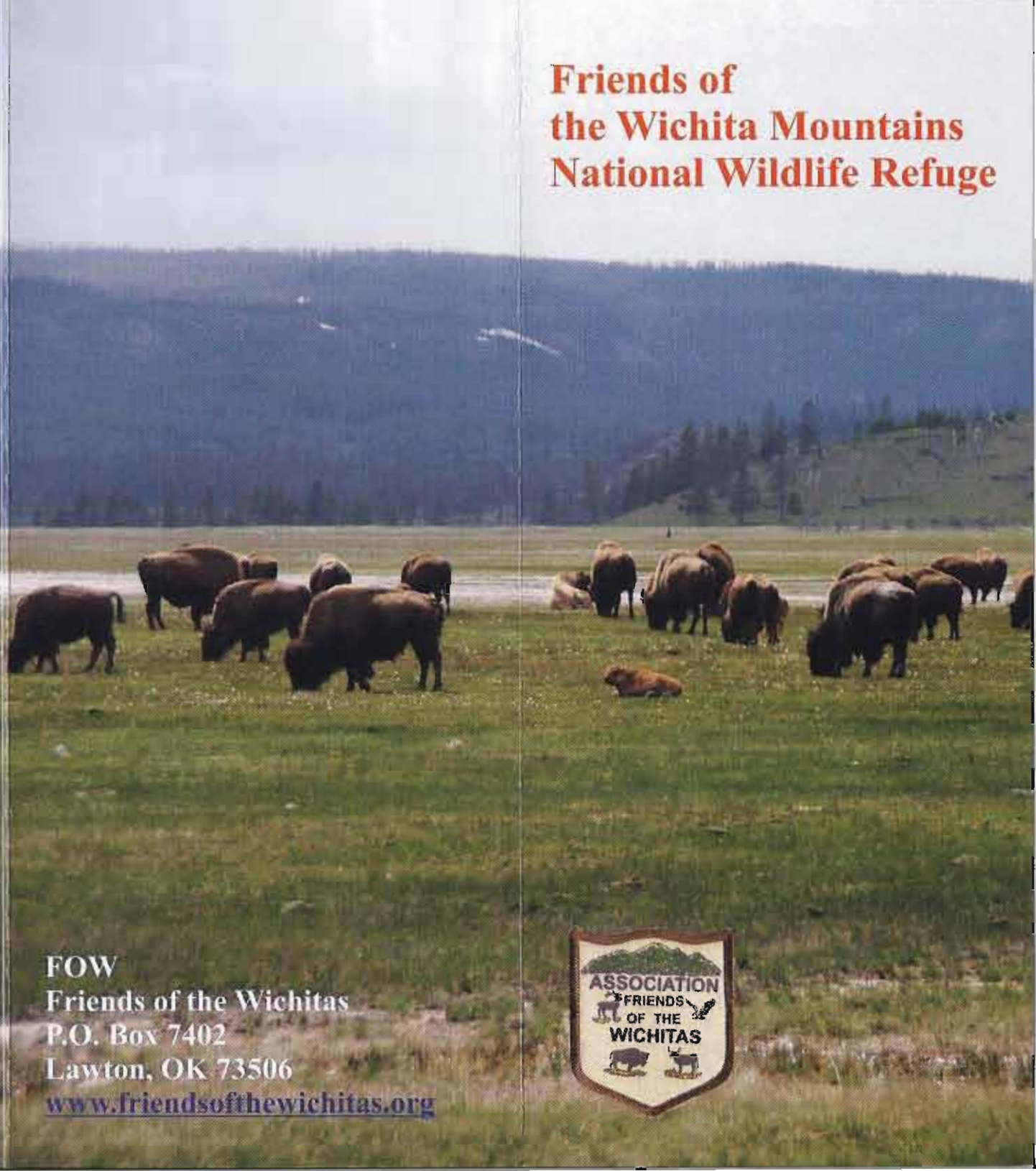
Please send your check and this form to:

**Friends of the Wichitas
P.O. Box 7402
Lawton, Ok 73506**

*For more information please email us at:
contact@friendsofthewichitas.org*

or visit our website at www.friendsofthewichitas.org

**Friends of
the Wichita Mountains
National Wildlife Refuge**



**FOW
Friends of the Wichitas
P.O. Box 7402
Lawton, OK 73506**

www.friendsofthewichitas.org



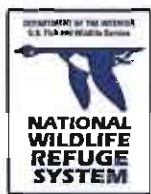


Waterfall

Friends promote understanding and appreciation of the Refuge and assist the U.S. Fish and Wildlife Service in meeting its mandates.

Friends

Friends of the Wichitas is a 501(c)3 organization established to support the Refuge and provide outreach opportunities to the visiting public. The



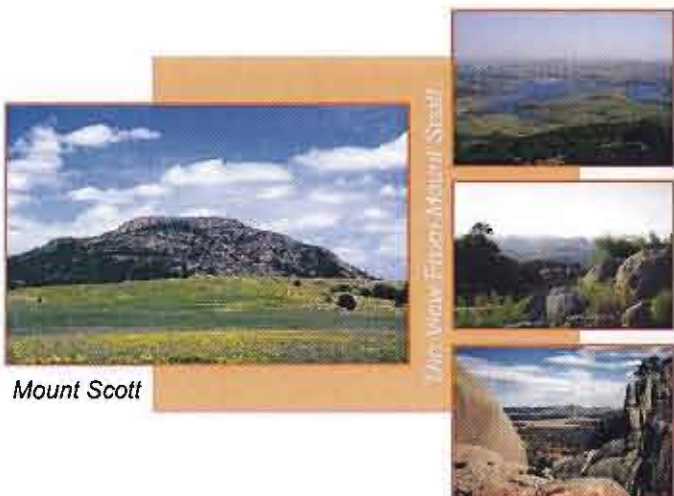
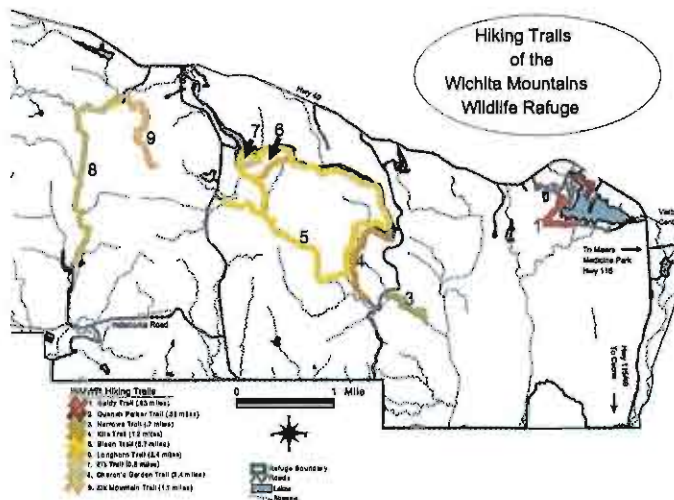
Our Goals

- Educate the public and decision makers on local, national, and international levels about the Wichita Mountains Wildlife Refuge
- Assist the refuge in accomplishing its mission through wildlife management and habitat improvement projects.
- Fund Refuge oriented projects through grants, memberships, donations, and other activities.



American Bison

- Grants are available to cover transportation costs for youth groups to attend environmental education classes at the Refuge.



Mount Scott



Refuge Quick Facts:

Date Established: July 4, 1901
Acreage: 59,020 acres
Highest Point: Mt. Pinchot - 2,479
Highest Accessible Point: Mt. Scott - 2,464
Designated Wilderness Areas:
 Charons Garden - 5,723 acres
 North Mountain - 2,847 acres
Bison Re-introduced: 1907
Elk re-introduced: 1908-1912
Longhorn brought to Refuge: 1927

Wichita Mountains Wildlife Refuge

Managed by the US Fish and Wildlife Service within the Department of the Interior

Set aside and protected in 1901, The Wichita Mountains Wildlife Refuge is the largest and most prominent block of intact central and southern mixed grasslands in the world. Less than 5% of central and southern mixed grasslands remain in North America, the habitat managed by the Refuge once covered a region that stretched from Southern Nebraska to North Texas.



Texas Longhorns



American Bison

The Refuge was the site of the Nation's first successful attempt to save American bison from extinction when 15 animals were reintroduced to the Refuge in 1907. Today, the bison herd managed by the Refuge are all descendent of those original reintroduced animals.

The Refuge is Nationally known for its management of Rocky Mountain elk, another reintroduction success story; white-tailed deer; and domestic Texas longhorn cattle, which were introduced to the Refuge in 1927 under a congressional appropriation mandate. In total, more than 50 mammal, 240 bird, 64 reptile and amphibian, 36 fish, and 806 plant species thrive here.



Rocky Mountain Elk

The mission of the National Wildlife Refuge System, encompassing over 550 refuges throughout the country, is to preserve this unique network of lands and waters for the conservation and management of fish, wildlife, and place resources for the benefit of present and future generations. The mission of the Friends of the Wichitas is to assist with this daunting task.