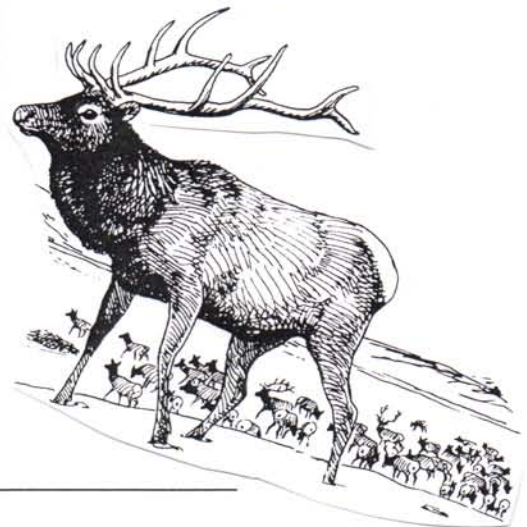
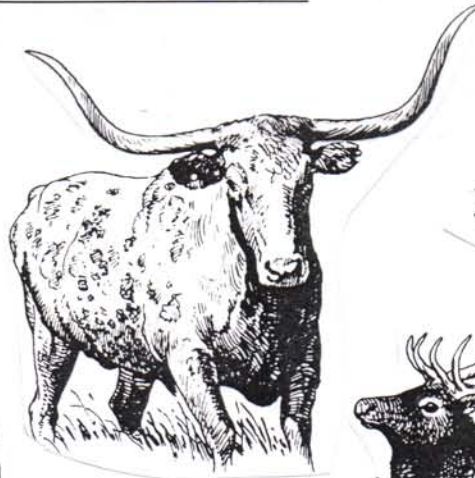


Are they
Antlers or **horns**?

1. _____ grow on members of the Deer Family (the Latin word for this family is *Cervidae*) like elk, moose, deer, and caribou.
2. _____ grow on bison and cattle and pronghorn and sheep and goats.
3. These are shed by the male animal each year and then a new set begins to grow: _____
4. These are not shed at all. If they get broken, a new one will not grow: _____



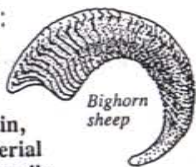
5. These usually have “branches:” _____
6. These usually do not have “branches:” _____



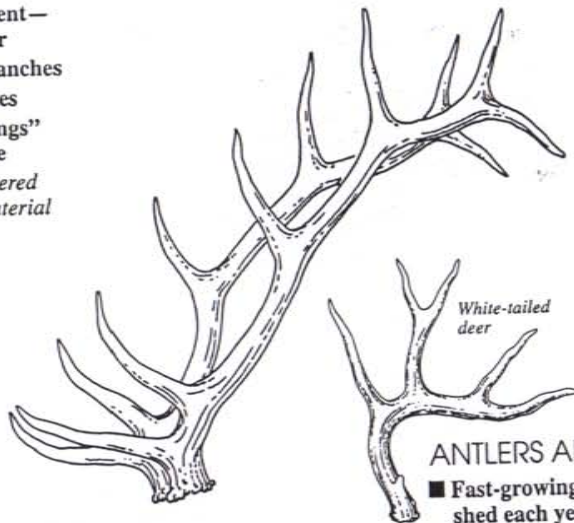
HORNS ARE:

- Made of bony core covered by a thin layer of keratin, the same material as your fingernails
- Slow growing and permanent — they are not shed each year
- More like daggers than branches
- Usually grown by both sexes
- Usually grow in yearly “rings” that mark the animal’s age

Pronghorns have horns covered with a sheath of hairlike material that is shed each year.



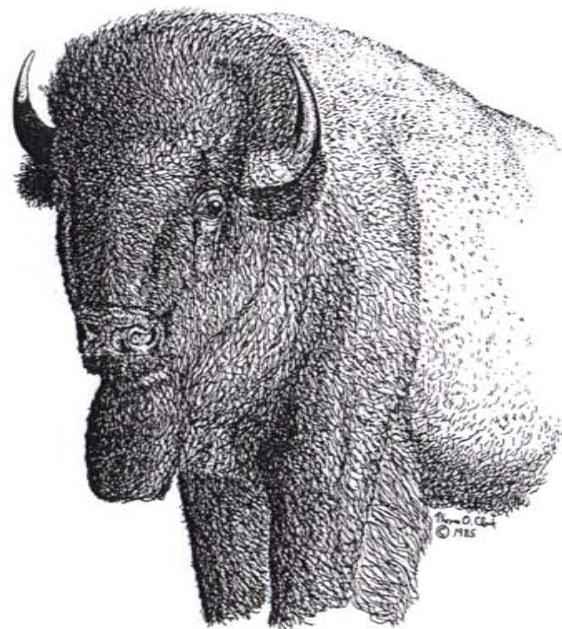
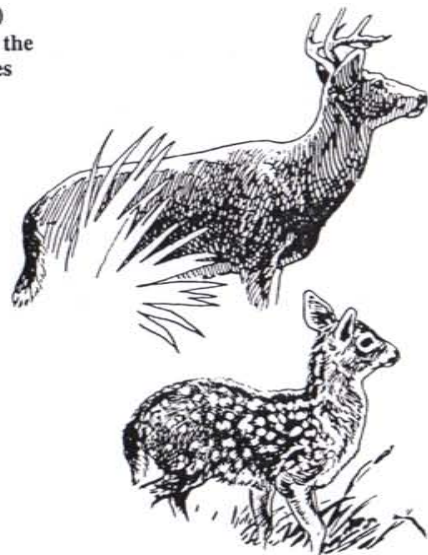
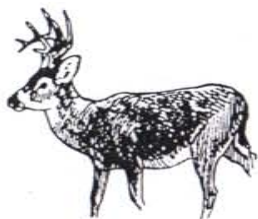
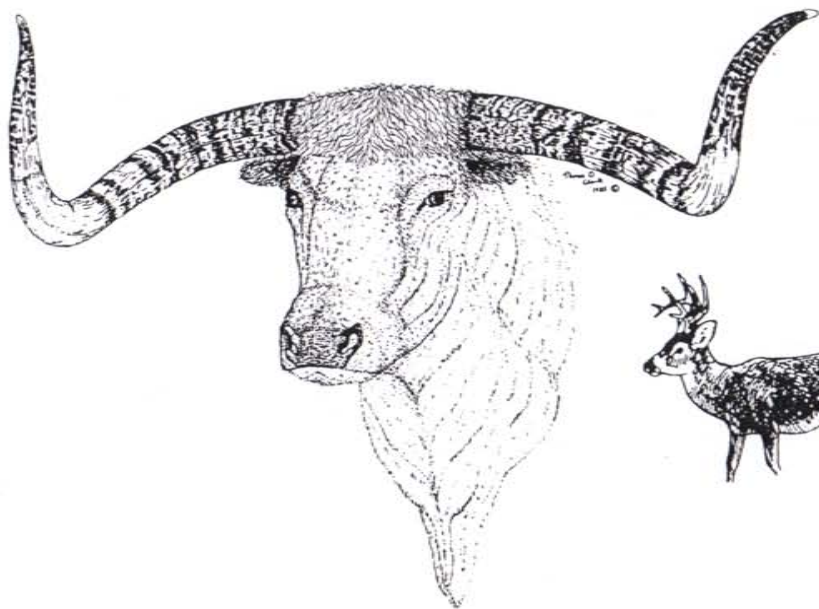
Bighorn sheep



White-tailed deer

ANTLERS ARE:

- Fast-growing bone that is shed each year
- Usually grown only by males (both sexes of caribou grow antlers)
- Often branched (but the number of points does not signify age)



Tom O. Clark
© 1985